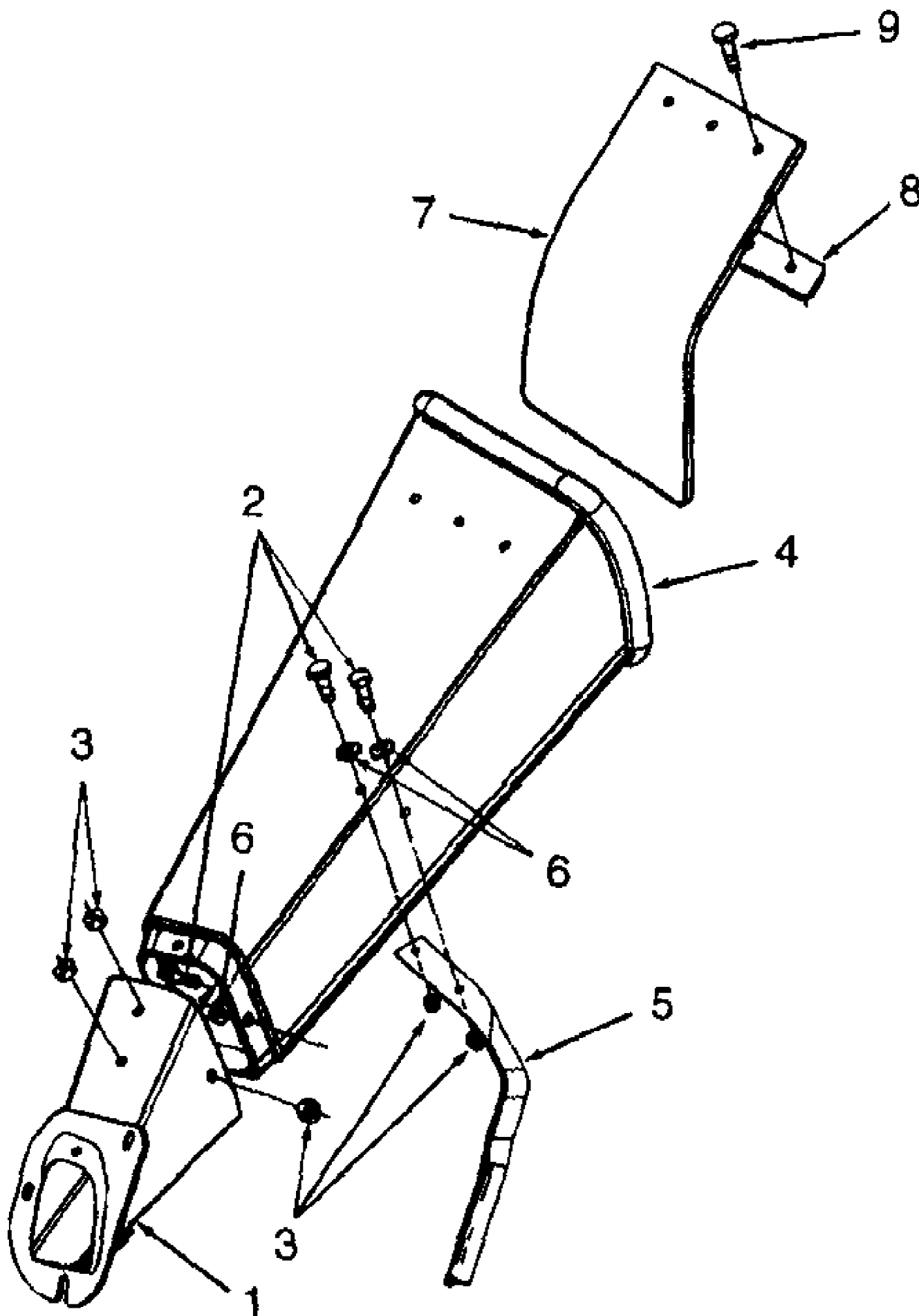


24A-315C190 Yard Boss 950 (1999)
Belt And Idler

Page 2 of 24

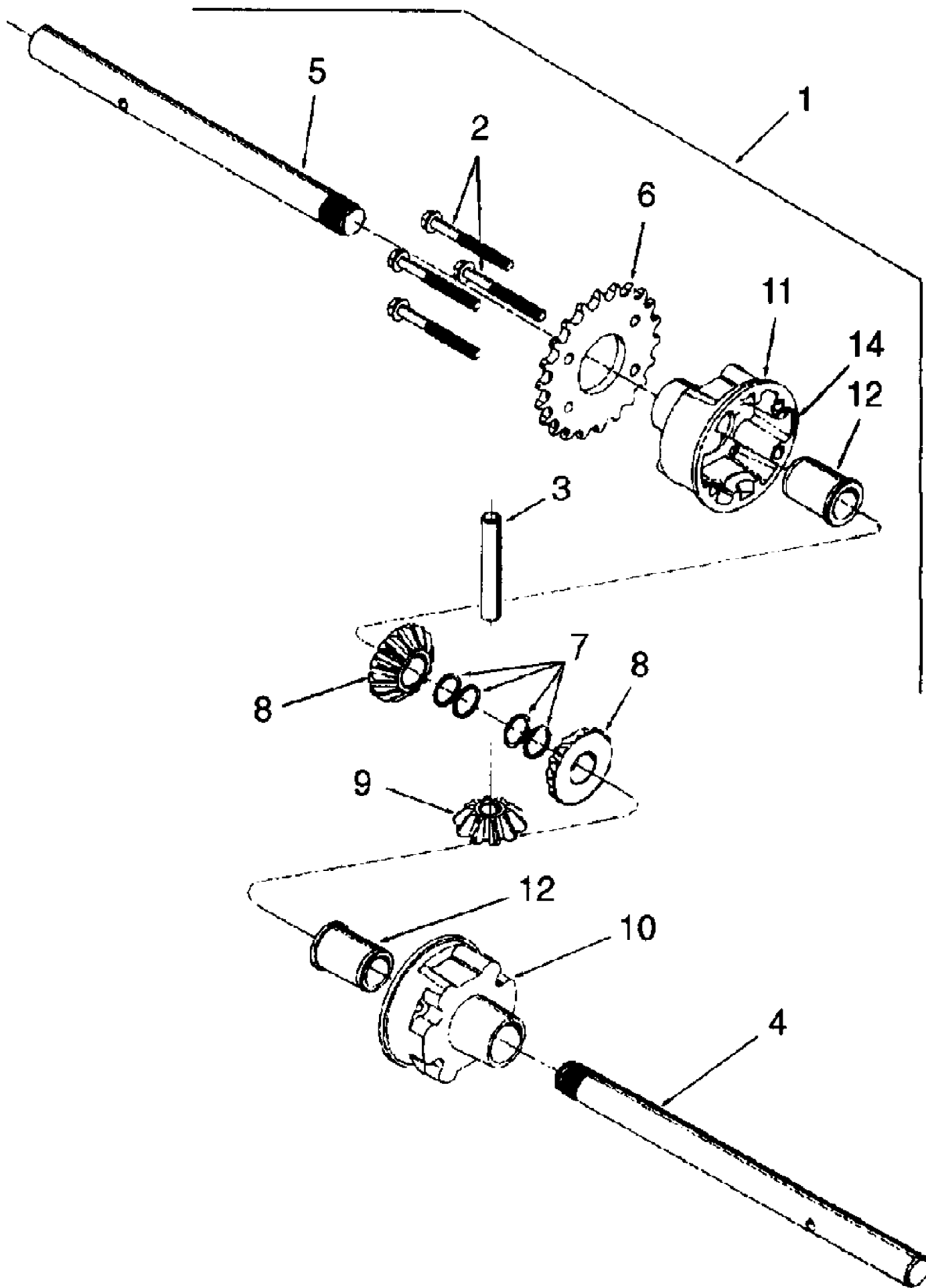
Ref #	Part Number	Qty	S/P/F	Description
1	710-0230	1	/P	Screw, Hex Cap, 1/4-28 x .50
2	710-0723	1	/P	Screw, Hex Cap, 3/8-16 x 1.25
3	710-0896	5	/P	Screw, Hex Wash Hd Tapp. 1/4-14 x .625
4	710-0646	1	S	Screw, Hex Cap, 5/16-18 x 2.0
5	712-0266	1	S	Nut, Hex Cent-L Jam, 3/8-16
6	712-3004A	2	/P	Nut, Hex Flange Lock, 5/16-18
7	719-0330A	1	/P	Adapter, Engine Mtg
8	731-1584	1	/P	Belt Cover
9	732-0745	1		Spring, Torsion, .54 x 1.0
10	736-0329	1	S	Washer, Lock, 1/4
11	748-0234	1	/P	Shoulder Spacer, .50 ID x .27 L
12	754-0256	1	S	V-Belt, 3/8 x 29.0 Lg
13	756-0313	1	/P	Pulley, Flat Idler
14	756-0987	1	S	Pulley Half, 2.0 Dia.
15	756-0986	1		Pulley Half, 2.0 Dia.
16	781-0611-0662	1		Bracket, Idler Pivot
17	781-0614	1		Bracket, Idler



24A-315C190 Yard Boss 950 (1999)
Chute Assembly

Page 4 of 24

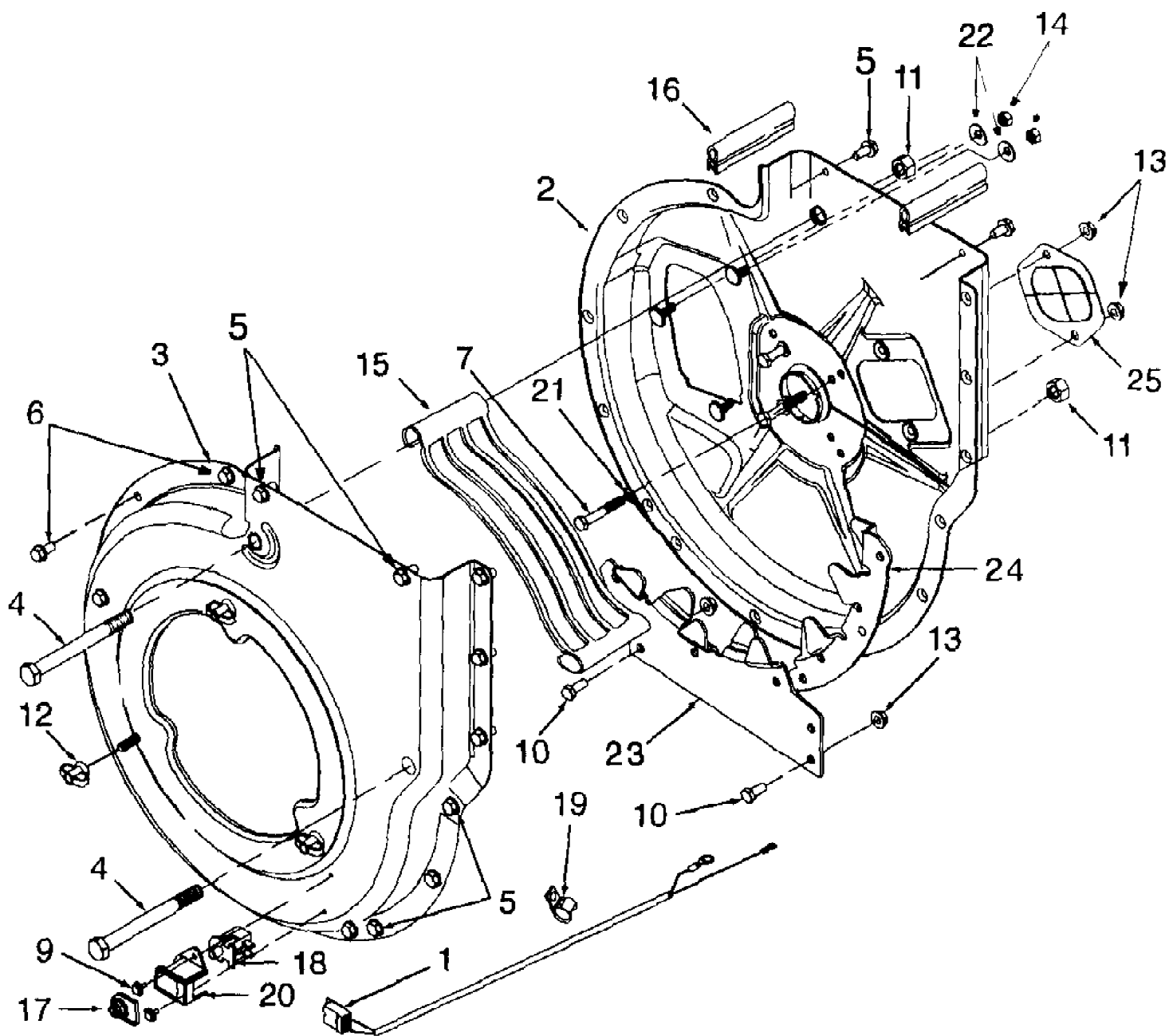
Ref #	Part Number	Qty	S/P/F	Description
1	681-0068-0662	1	S	Chute Assembly, Chipper
2	710-0751	5	/P	Screw, Hex Cap, 1/4-20 x .625
3	712-3027	5	S	Nut, Hex Flange Lock, 1/4-20
4	731-1609	1	S	Chute, Chipper
5	781-0625-0662	1		Bracket, Chipper Chute Support
6	736-0173	5	/P	Washer, Flat, .28 x .74 x .63
7	735-0249	1	S	Flap, Chipper Chute
8	781-0633	1		Strip, Chute Flap
9	728-0175	3		Rivet, Pop, .156 x .504
	731-1617	1	/P	Tamper Plug (Optional - Not Shown)



24A-315C190 Yard Boss 950 (1999)
Differential Assembly

Page 6 of 24

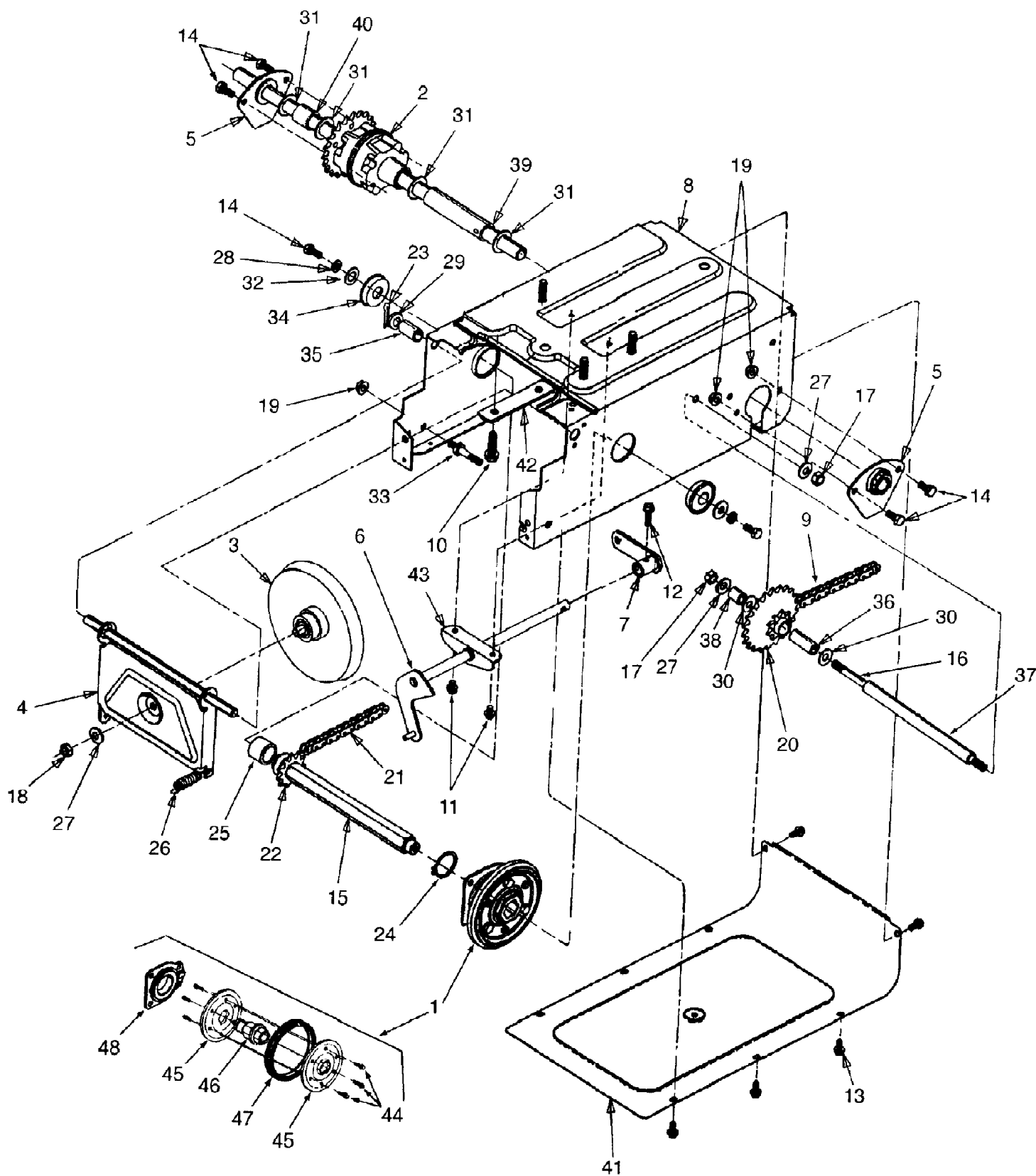
Ref #	Part Number	Qty	S/P/F	Description
1	618-0168	1		Differential Ass'y Complete
2	710-1206	4	/P	Screw, Hex Wash Hd Tapp 1/4-20 x 2-5/16
3	711-1035	1		Cross Shaft
4	711-1037	1		Axle Shaft, .75 x 10.95
5	711-1038	1		Axle Shaft, .75 x 9.82
6	713-0445	1		Spocket, 22T
7	716-0232	4		Ring, Retaining
8	717-1358	2		Gear, Differential, 14T
9	717-1437	2		Gear, Differential, 10T
10	719-0333	1		Housing, Differential RH
11	719-0334	1		Housing, Differential LH
12	748-0383	2	S	Bearing, Flange, .75 ID x 1.0 OD
?13	737-0300	1 oz	S	Grease, Benalene
14	721-0328	1		Sealant, Ultra Grey Loctite 5699



24A-315C190 Yard Boss 950 (1999)
Flair Housing Assembly

Page 8 of 24

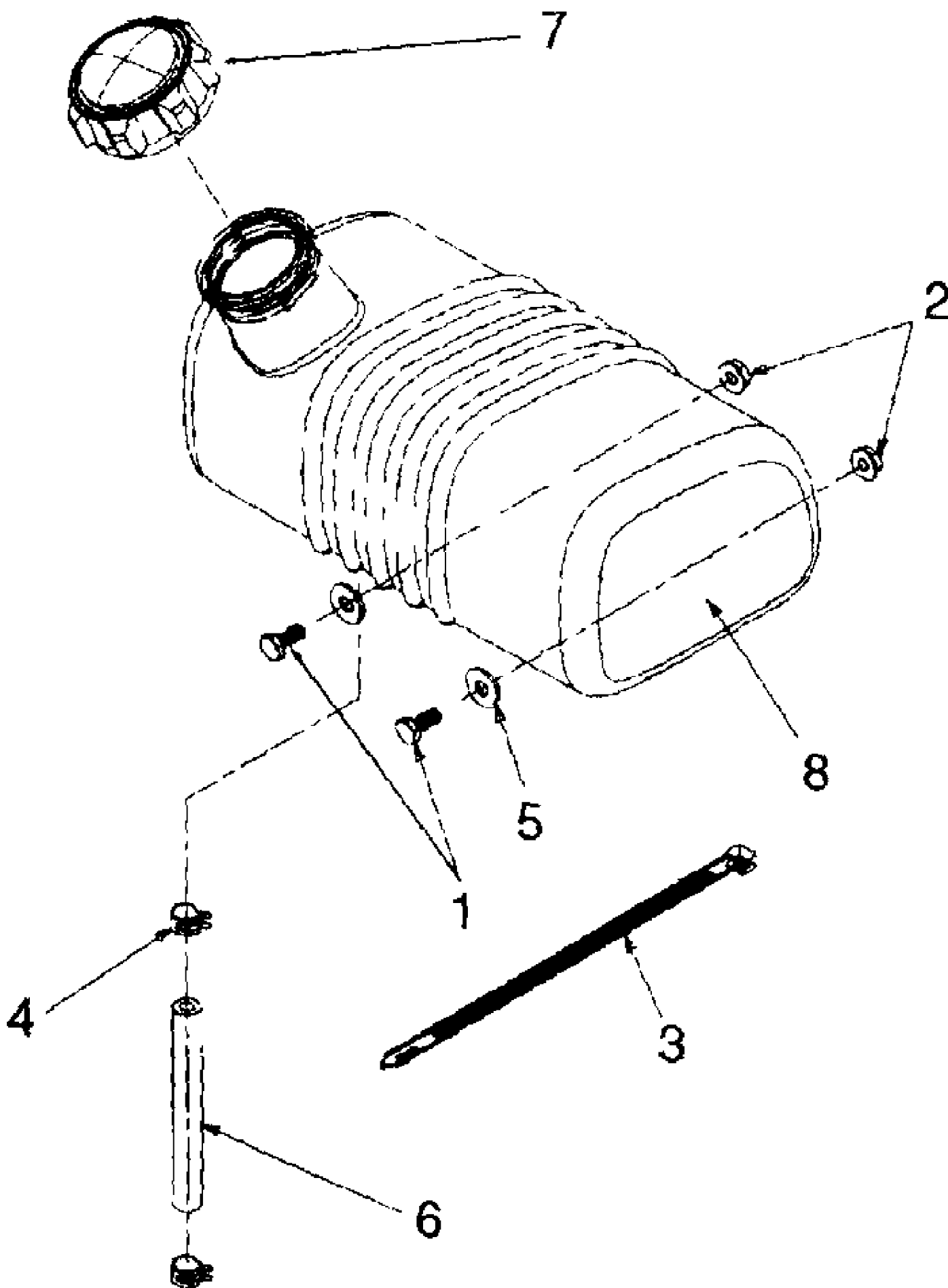
Ref #	Part Number	Qty	S/P/F	Description
1	629-0241	1		Harness, Wire
2	681-0059-0662	1		Housing Ass'y, Inner Flail
3	681-0060-0662	1		Housing Ass'y, Outer Flail
4	710-0362	2		Screw, Hex Cap, 1/2-13 x 5.0
5	710-0604	10	S	Screw, Hex Wash Hd Tapp 5/16-18 x .62
6	710-0607	8	/P	Screw, Hex Wash Hd Tapp 5/16-18 x .50
7	710-0772	3	/P	Screw, Hex Cap, 5/16-24 x 2 GR5
9	710-1268	1	/P	Screw, Hex Wash Hd Tapp #10-16 x .38
10	710-3008	2	/P	Screw, Hex Cap, 5/16-18 x .75 GR5
11	712-0384	2	S	Nut, Hex Center Lock, 1/2-13
12	712-0421	2		Knob, 5/16-18
13	712-3004A	3	/P	Nut, Hex Flange Lock, 5/16-18
14	712-3010	3	S	Nut, Hex, 5/16-18
15	719-0326	1		Screen, Discharge
16	723-0438	2		Rubber Seal
17	725-1700	1	S	Cover, Switch
18	725-3166	1	S	Switch, Snap Mount
19	726-0272	1	/P	Clamp
20	731-1613	1	S	Cover, Safety Switch Mtg.
21	736-0119	3	S	Washer, Lock, 5/16
22	736-0242	3	/P	Washer, Bell, .345 x .88 x .06
23	781-0598	1	S	Blade, Lower Shredder
24	781-0599	1	S	Blade, Upper Shredder
25	781-0627	1		Cover, Chipper Blade



24A-315C190 Yard Boss 950 (1999)
Friction Wheel And Drive

Page 10 of 24

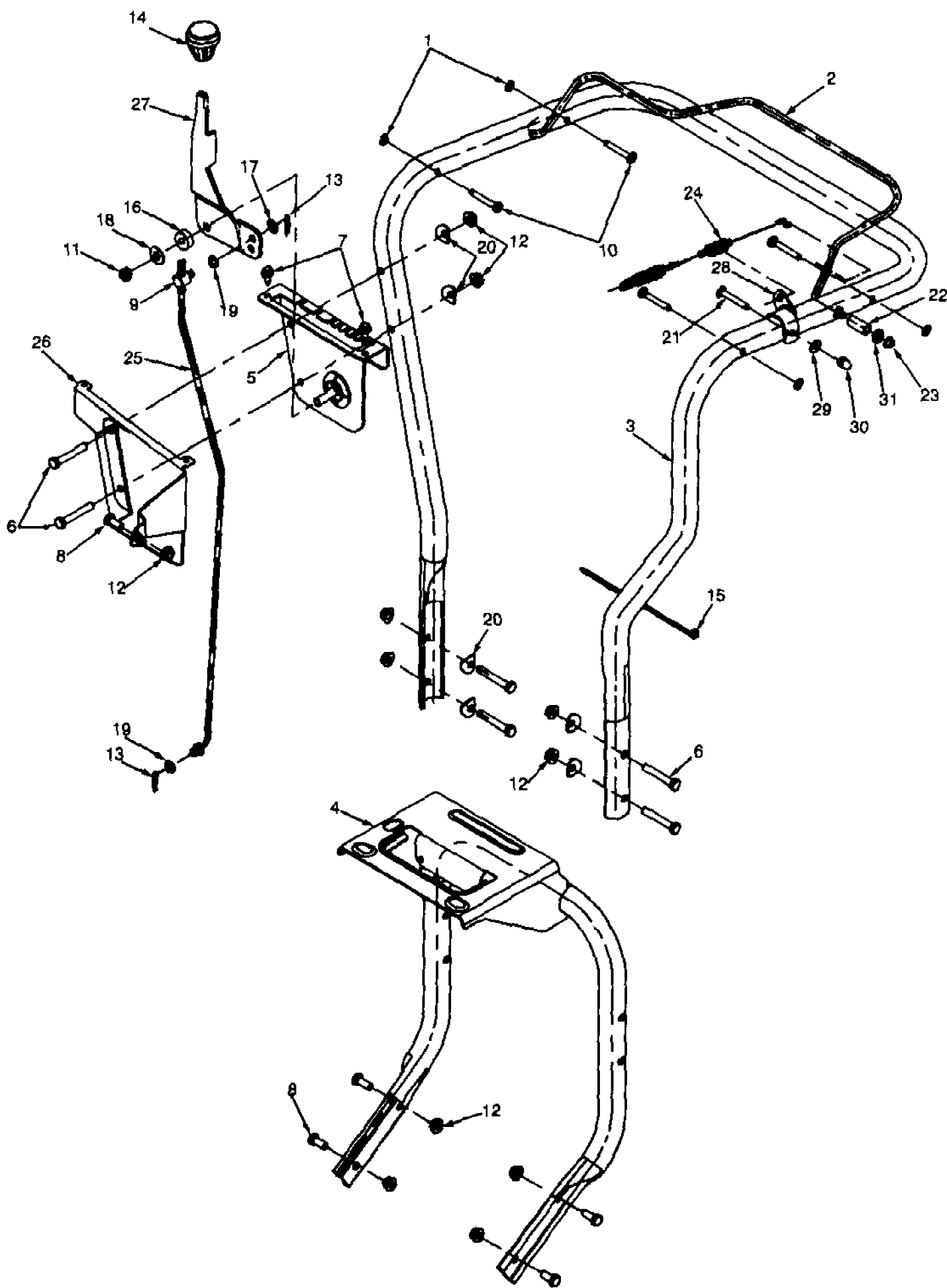
Ref #	Part Number	Qty	S/P/F	Description
1	684-0042B	1	S	Friction Wheel Ass'y Complete
2	618-0168	1		Differential Ass'y Complete
3	656-0012A	1	S	Friction Disc Assembly
4	681-0055	1	S	Bracket Ass'y, Frctn Wheel Supt
5	681-0058	2	/P	Bracket Ass'y, Axle
6	681-0082	1		Shaft Ass'y, Shift
7	681-0072	1		Arm Ass'y, Shift
8	681-0081-0498	1		Frame Assembly
9	713-0374	1	/P	Chain, #420 x 36 Lnks
10	710-0502A	4	/P	Screw, Hex Wash Hd Tapp 3/8-16 x 1.25
11	710-0653	2	/P	Screw, Hex Wash Hd Tapp 1/4-20 x .375
12	710-0788	1	/P	Screw, Hex Wash Hd Tapp 1/4-20 x 1.0
13	710-0896	8	/P	Screw, Hex Wash Hd Tapp 1/4-14 x .625
14	710-3008	6	/P	Screw, Hex Cap, 5/16-18 x .75 GR5
15	711-1073	1		Hex Shaft
16	711-1028	1		Jack Shaft
17	712-0241	2	/P	Nut, Hex, 3/8-24
18	712-0711	1	/P	Nut, Hex Jam, 3/8-24
19	712-3004A	5	/P	Nut, Hex Flange Lock, 5/16-18 GR5
20	713-0330	1		Sprocket Ass'y, 9T & 22T
21	713-0284	1		Chain, #41 x 36 Lnks
22	713-0413	1		Sprocket, 10T
23	714-0111	1	S	Pin, Cotter, 3/32 x 1.0
24	716-0102	1	S	Ring, Snap, 1.0 Dia.
25	750-0998	1		Spacer, .675 x 1.0 x 1.53
26	732-0209	2	S	Spring, Extension
27	736-0105	3	/P	Washer, Bell, .406 x .870 x .063
28	736-0119	2	S	Washer, Lock, 5/16
29	736-0160	1	S	Washer, Flat, .536 x .930 x .05
30	736-0267	2	S	Washer, Flat, .385 x .87 x .06
31	736-0287	4	S	Washer, Flat, .793 x 1.24 x .06
32	736-3089	2	/P	Washer, Flat, .345 x 1.0 x .100
33	738-0908	1		Bolt, Idler
34	741-0563	2	S	Bearing, Ball
35	748-0382	1		Spacer, .508 x .75 x .94
36	750-0351	1		Sleeve, .380 x .623 x 1.5
37	750-0978	1		Spacer, .407 x .625 x 7.86
38	750-0979	1		Spacer, .407 x .625 x .71
39	750-0980	1		Spacer, .782 x 1.0 x 4.11
40	750-0981	1		Spacer, .782 x 1.0 x .99
41	781-0612A-0498	1		Cover, Frame Bottom
42	781-0638A	2	/P	Plate, Frame Reinforcement
43	784-5590-0498	1		Bracket, Frame Shift
44	710-0599	6	/P	Screw, Hex Wash Hd Tapp 1/4-20
45	784-5617	2		Plate, Friction Wheel
46	718-0301A	1	S	Hub, Friction Wheel
47	735-0243	1	S	Wheel, Rubber Friction
48	618-0063	1		Bearing Ass'y, Friction Wheel



24A-315C190 Yard Boss 950 (1999)
Fuel Tank

Page 12 of 24

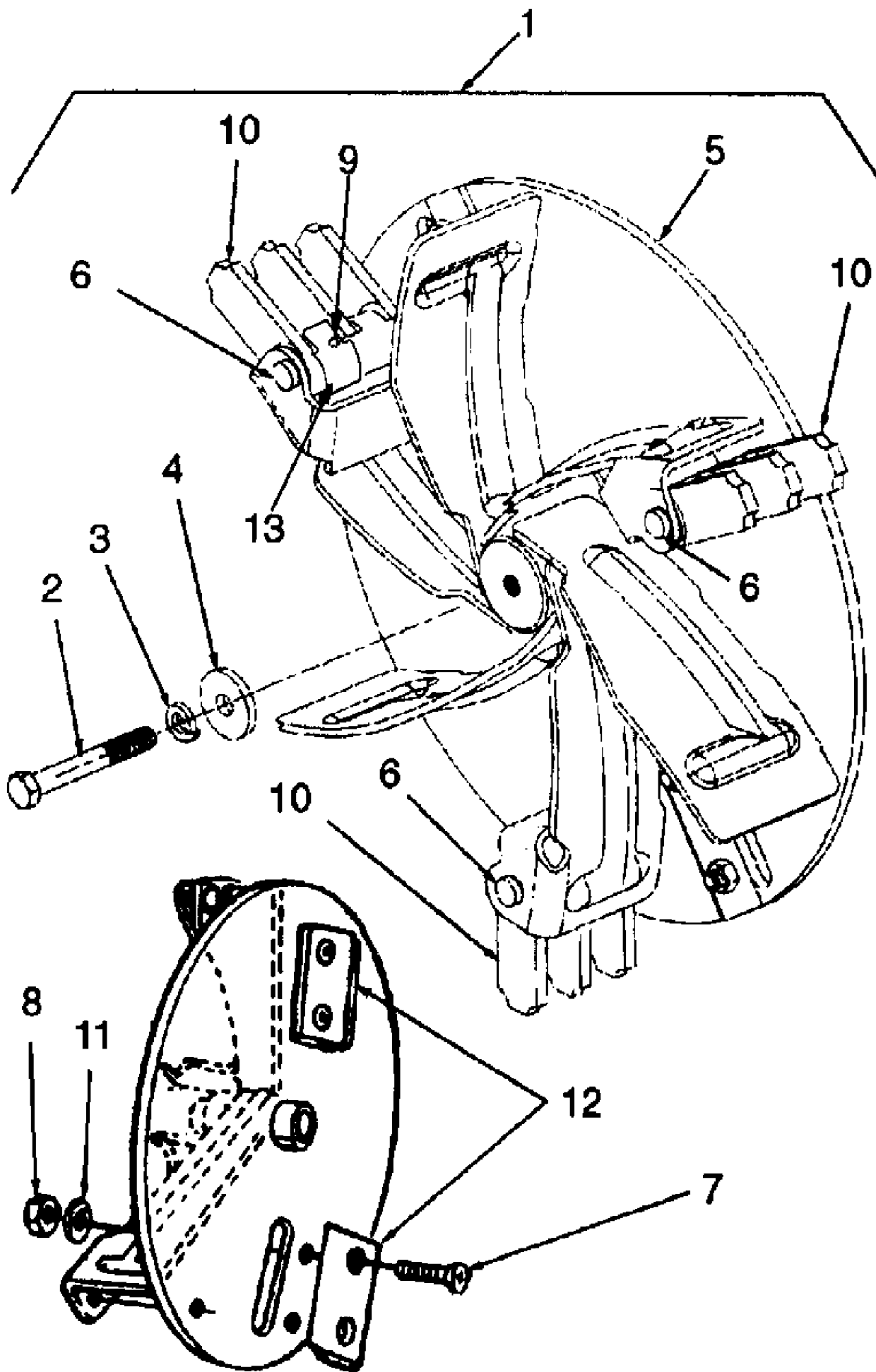
Ref #	Part Number	Qty	S/P/F	Description
1	710-0751	2	/P	Screw, Hex Cap, 1/4-20 x .62
2	712-3027	2	S	Nut, Hex Flange Lock, 1/4-20
3	726-0209	1	/P	Cable Tie, 30.66 Lg
4	726-0205	2	/P	Clamp, Hose, 1/2 Inch
5	736-0173	2	/P	Washer, Flat, .28 x .74 x .063
6	751-0535	9 in.		Hose, Fuel Line 9 Inch
7	751-0603	1	S	Cap, Fuel
8	751-0615	1		Tank, Fuel



24A-315C190 Yard Boss 950 (1999)
Handle And Control Assembly

Page 14 of 24

Ref #	Part Number	Qty	S/P/F	Description
1	1539-019	4		Nut, Push, .25
2	747-1133-0662	1		Control Assembly, Clutch
3	749-1083-0662	1		Handle Assembly, Upper
4	649-0012-0662	1		Handle Assembly, Lower
5	681-0076-0637	1	/P	Bracket Assembly, Shift
6	710-3103	6	/P	Screw, Hex Cap, 5/16-18 x 2.0
7	710-0896	2	/P	Screw, Hex Wash Hd, 4-14x
8	710-3008	5	/P	Screw, Hex Cap 5/16-18 x .75
9	711-0677	1	S	Ferrule
10	711-0737	4	S	Pin, Stud, .250 x 1.75
11	712-0116	1	S	Nut, Hex Insert Jam Lock 3/8
12	712-3004A	11	/P	Nut, Hex Flange Lock 5/16-18
13	714-0104	2	S	Pin, Internal Cotter
14	720-0232	1	S	Knob, Shift
15	725-0157	1	/P	Cable Tie
16	735-0126	1	S	Rubber Washer
17	736-0117	1	S	Washer, Flat .385 x .62 x .6
18	736-0300	1	S	Washer, Flat, .406 x .875 x .059
19	736-0413	2	/P	Washer, Spring, .390 x .62
20	736-0451	6	S	Washer, Saddle, .320 x .93
21	710-0495	1		Carr. Bolt 1/4-20 x 1.75" Lg.
22	750-1185	1		Spacer
23	726-0135	1	/P	Nut, Cap Speed
24	746-1080	1		Cable, Clutch
25	747-0626	1		Rod, Shift
26	781-0626-0662	1		Cover, Shift
27	784-0297A	1	/P	Handle, Shift
28	781-0157	1	S	Bracket, Cable Mtg.
29	736-3020	1	S	Washer, Flat .271 x .63 x .65
30	712-0442	1	S	Nut, Lock, Acorn 1/4-20
31	736-0275	1	S	Washer, Flat 5/16



24A-315C190 Yard Boss 950 (1999)
Impeller Assembly

Page 16 of 24

Ref #	Part Number	Qty	S/P/F	Description
1	681-0078	1	S	Impeller Ass'y, Complete. Includes Ref. Nos. 5 thru 13
2	710-1273	1		Screw, Hex Cap, 3/8-24 x 2.75 GR5
3	736-0217	1	S	Washer, Lock, 3/8 Heavy Duty 1
4	736-0247	1	/P	Washer, Flat, .406 x 1-1/4 HD1
5	681-0052	1	S	Impeller Assembly
6	711-0833B	3	S	Pin, Clevis
7	710-1054	4	/P	Screw, Flat Hd. Cap, 5/16-24 x 1.0
8	712-0411	4	S	Nut, Hex Insert Lock, 5/16-24
9	715-0166	3		Pin, Spirol, 5/32 x 1.125
10	719-0329	3		Blade, Flail
11	736-0119	4	S	Washer, Lock, 5/16
12	742-0544	2	S	Blade, Chipper
13	781-0735	3		Pin Retaining Clip

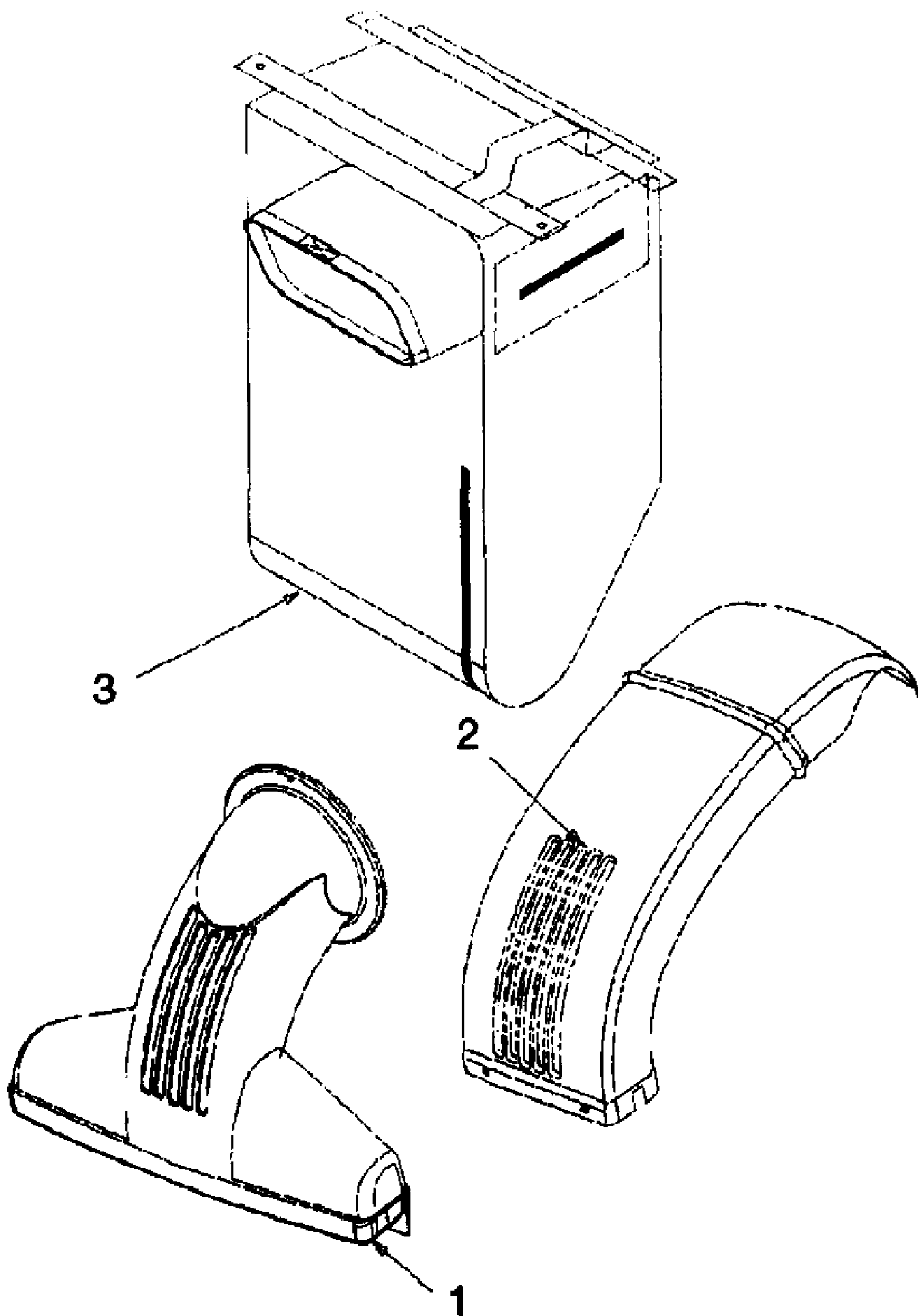
No
Diagram
Available

Parts List
Only

24A-315C190 Yard Boss 950 (1999)
Labels

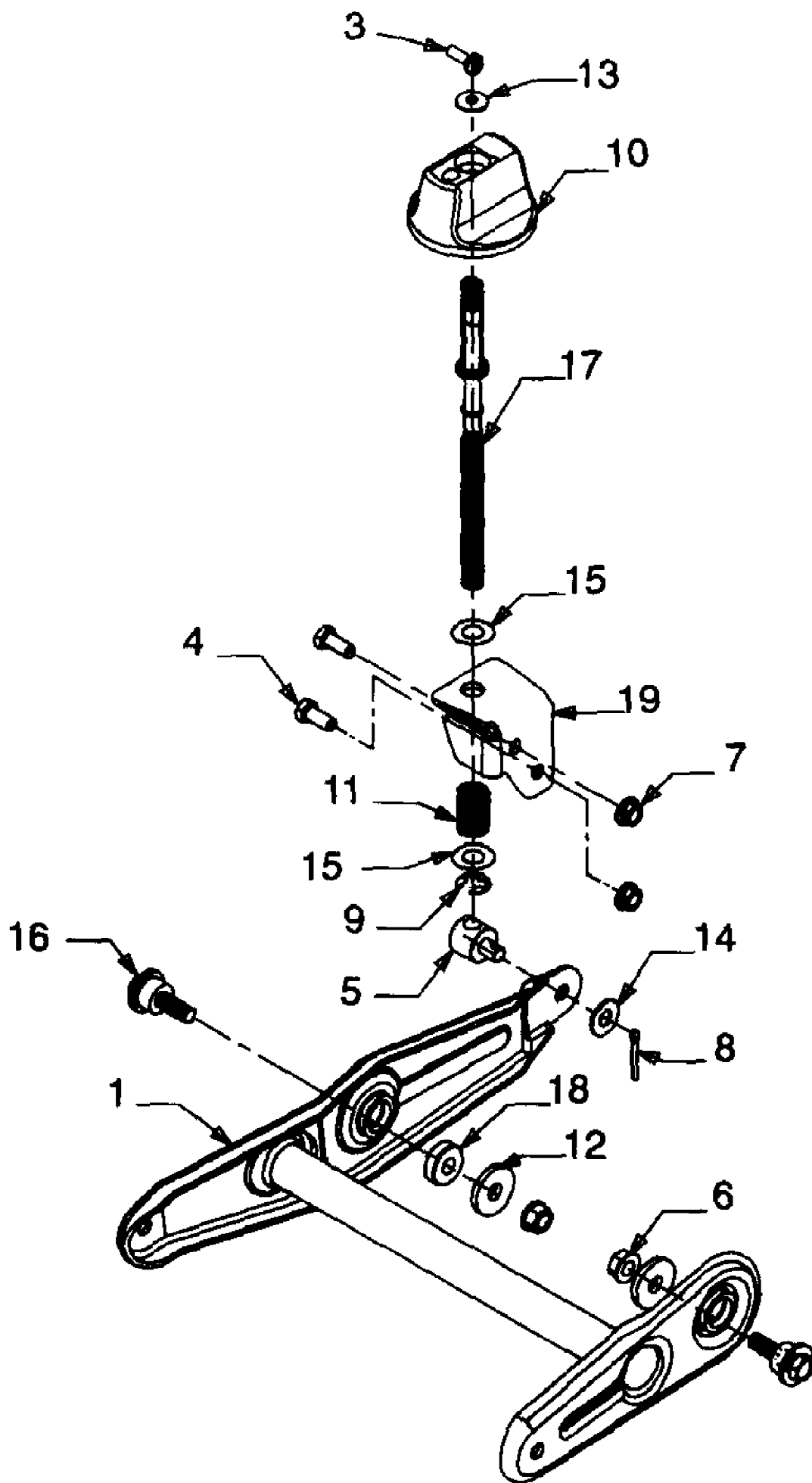
Page 18 of 24

Ref #	Part Number	Qty	S/P/F	Description
	777S30181	1	/P	Label - Danger Top of Chipper Chute
	777I20350	1		Label - Squeeze Bail
	777I20351	1		Label - Raise, Lower
	777S30183	1		Label - Warning Top Flail Housing
	777S30041	1		Label - Warning Back Flail Housing
	777I20354	1		Label - 6 Speed
	777D00299	1		Label - Hubcaps
	777D00092	1		Label - 950 Front of Housing



24A-315C190 Yard Boss 950 (1999)
Nozzle And Bag

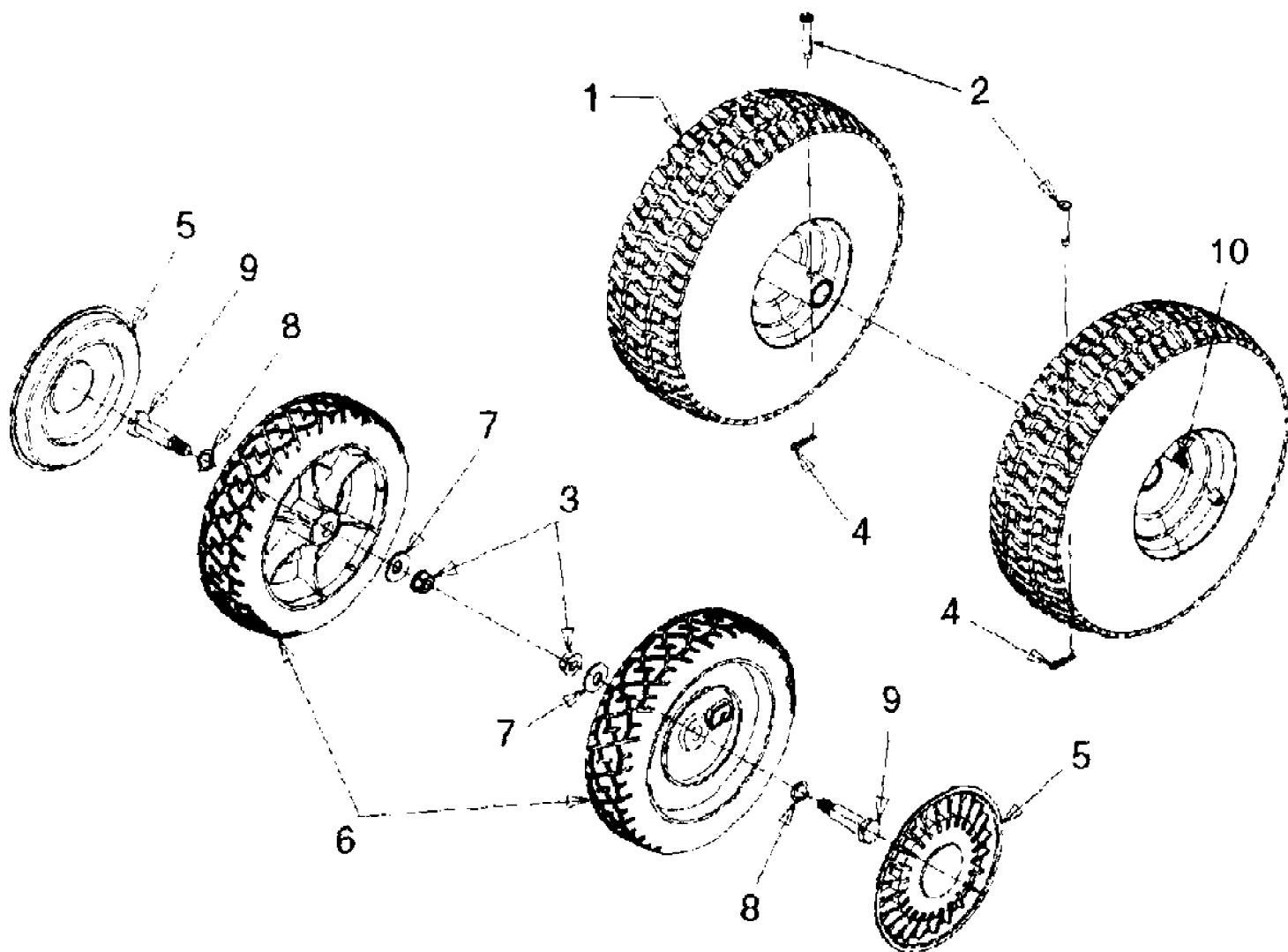
Ref #	Part Number	Qty	S/P/F	Description
1	631-0028	1	S	Nozzle Assembly, Vacuum
2	731-1573	1		Chute, Discharge
3	764-0472	1	S	Bag, Vacuum



24A-315C190 Yard Boss 950 (1999)
Wheel Pivot And Bracket

Page 22 of 24

Ref #	Part Number	Qty	S/P/F	Description
1	681-0096-0662	1		Bracket Ass'y, Wheel Pivot
3	710-0924	1	/P	Screw, Pan Hd Mach, 1/4-20 x .75
4	710-3008	2	/P	Screw, Hex Cap, 5/16-18 x .75 GR5
5	711-1041	1		Ferrule, Adjustment
6	712-0431	2	S	Nut, Hex Flange Lock, 3/8-16
7	712-3004A	2	/P	Nut, Hex Flange Lock, 5/16-18
8	714-0115	1	S	Pin, Cotter, 1/8 x 1.0
9	716-0104	1	S	E-Ring, .50 Dia.
10	720-0236	1	S	Knob
11	732-0645	1	S	Spring, Compression
12	736-0247	2	/P	Washer, Flat, .406 x 1-1/4
13	736-0270	1	/P	Washer, Bell, .265 x .75 x .062
14	736-0300	1	S	Washer, Flat, .406 x .875 x .059
15	736-0369	2	S	Washer, Flat, .508 x 1.0 x .020
16	738-0955	2		Shoulder Bolt, .75 x .43: 3/8-16
17	747-0631	1		Rod, Height Adjustment
18	711-0242	1	S	Spacer, .380 ID x 1.0 OD x .32 Lg
19	781-0605-0662	1		Bracket, Height Adj



24A-315C190 Yard Boss 950 (1999)
Wheels

Page 24 of 24

Ref #	Part Number	Qty	S/P/F	Description
1	634-0100	2		Wheel Ass'y Complete
	634-0101-0662	2	S	Rim Assembly
	734-1598	2	S	Tire, Pneumatic, 10 x 4
2	711-1017	2	/P	Pin, Clevis, .25 x 1.53
3	712-0431	2	S	Nut, Hex Flange Lock, 3/8-16
4	714-0104	2	S	Pin, Internal Cotter
5	731-0981A	2	S	Hubcap, Gray
6	734-1513B	2	S	Wheel Ass'y, 8 x 2.0 Complete
7	736-0105	2	/P	Washer, Bell, .401 x .870 x .06
8	736-0232	2	S	Washer, Wave, .53 x .78 x .013
9	738-0213	2	/P	Shoulder Bolt
10	734-0255	2	S	Valve, Tubeless Air